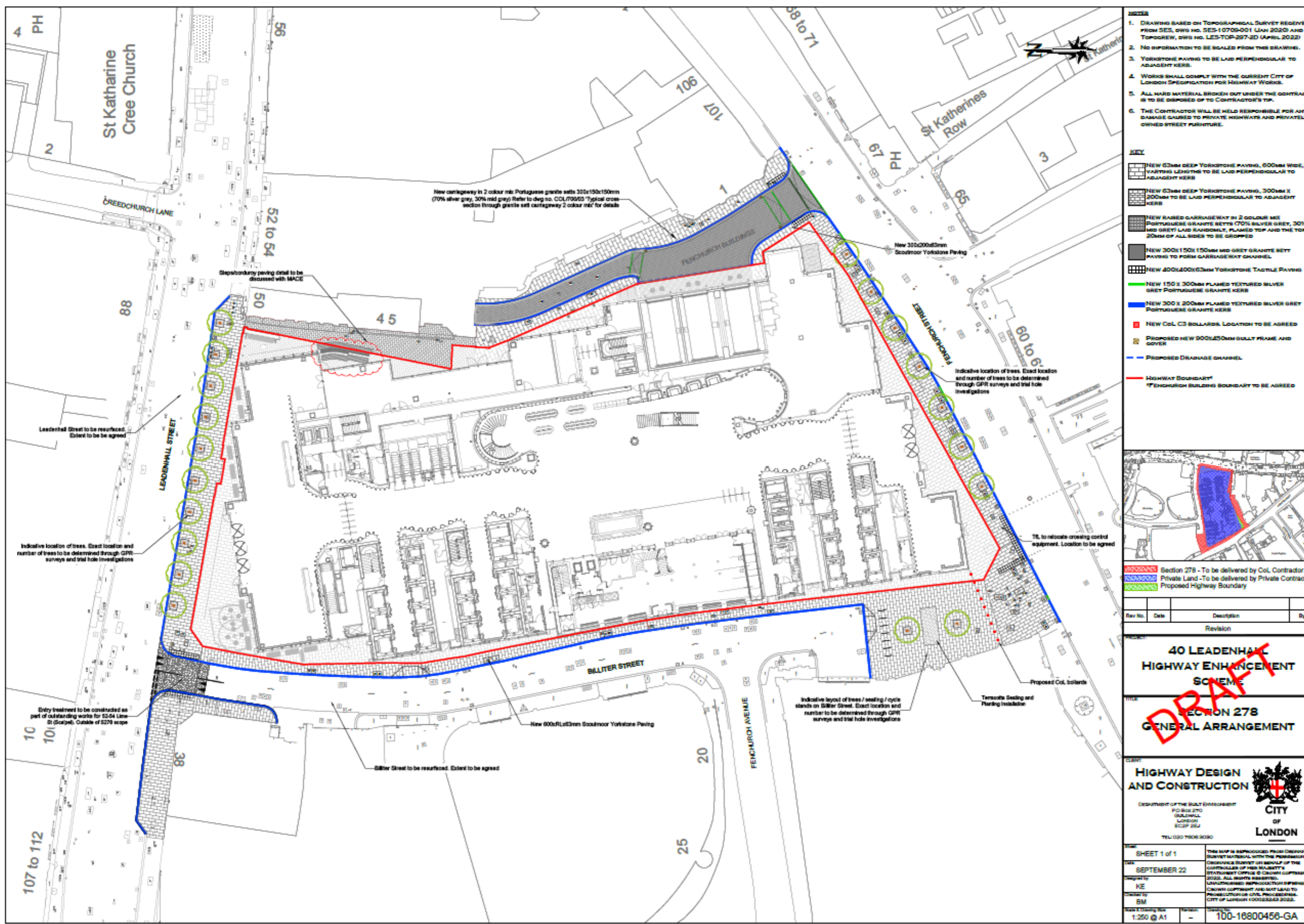
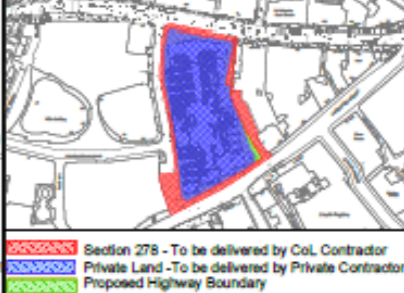


Appendix 3 – 40 Leadenhall Street S278 Scheme Design



- NOTES**
1. DRAWINGS BASED ON TOPOGRAPHICAL SURVEY RECEIVED FROM SES, DWG NO. SES-10709-001 (JAN 2020) AND TOPOGRAW, DWG NO. LES-TOP-297-2D (APRIL 2022)
 2. NO INFORMATION TO BE SCALED FROM THIS DRAWING.
 3. YORKSTONE PAVING TO BE LAID PERPENDICULAR TO ADJACENT KERB.
 4. WORKS SHALL COMPLY WITH THE CURRENT CITY OF LONDON SPECIFICATION FOR HIGHWAY WORKS.
 5. ALL HARD MATERIAL BROKEN OUT UNDER THE CONTRACT IS TO BE DISPOSED OF TO CONTRACTOR'S TP.
 6. THE CONTRACTOR WILL BE HELD RESPONSIBLE FOR ANY DAMAGE CAUSED TO PRIVATE HIGHWAYS AND PRIVATELY OWNED STREET FURNITURE.

- KEY**
- [Pattern] NEW 60mm DEEP YORKSTONE PAVING, 600mm WIDE, VARYING LENGTHS TO BE LAID PERPENDICULAR TO ADJACENT KERB
 - [Pattern] NEW 60mm DEEP YORKSTONE PAVING, 300mm X 200mm TO BE LAID PERPENDICULAR TO ADJACENT KERB
 - [Pattern] NEW RASSED CARRIAGEWAY IN 2 COLOUR MIX PORTUGUESE GRANITE SETTS (70% SILVER GREY, 30% MID GREY) LAID RANDOMLY, FLAMED TOP AND THE TOP 20mm OF ALL SIDES TO BE CHIPPED
 - [Pattern] NEW 300x150x150mm MID GREY GRANITE SETT PAVING TO FORM CARRIAGEWAY CHANNEL
 - [Pattern] NEW 400x400x60mm YORKSTONE TACTILE PAVING
 - [Line] NEW 150 X 300mm FLAMED TEXTURED SILVER GREY PORTUGUESE GRANITE KERB
 - [Line] NEW 300 X 200mm FLAMED TEXTURED SILVER GREY PORTUGUESE GRANITE KERB
 - [Symbol] NEW CoL C3 BOLLARDS. LOCATION TO BE AGREED
 - [Symbol] PROPOSED NEW 900x150mm GULLY FRAME AND COVER
 - [Line] PROPOSED DRAINAGE CHANNEL
 - [Line] HIGHWAY BOUNDARY*
 - [Line] FENCHURCH BUILDINGS BOUNDARY TO BE AGREED



Rev No.	Date	Description	By
Revision			

**40 LEADENHALL
HIGHWAY ENHANCEMENT
SCHEME**

DRAFT

**SECTION 278
GENERAL ARRANGEMENT**

**HIGHWAY DESIGN
AND CONSTRUCTION**

DEPARTMENT OF THE BUILT ENVIRONMENT
PO BOX 270
GUILDHALL
LONDON
EC3P 3EA
TEL: 020 7606 2030



**CITY
OF
LONDON**

SHEET 1 of 1	THIS DRAWING IS REPRODUCED FROM ORIGINAL SURVEY MATERIAL WITH THE PERMISSION OF THE CONTROLLER OF HER MAJESTY'S STATIONERY OFFICE © CROWN COPYRIGHT 2022. ALL RIGHTS RESERVED. UNAUTHORIZED REPRODUCTION OR DISSEMINATION OF THIS DOCUMENT IS PROHIBITED BY LAW. PENALTIES FOR INFRINGEMENTS ARE ENFORCED BY THE CROWN PROSECUTOR GENERAL.
Date: SEPTEMBER 22	
Prepared by: KE	
Checked by: BM	
Scale & Drawing Size: 1:250 @ A1	Reference: 100-16800456-GA